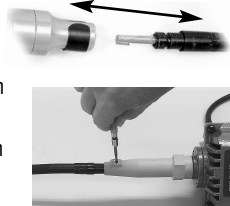


Removing Worn Shafts and Sheaths

Always be sure your power tool is unplugged during maintenance procedures!

Shafts and sheaths last longer when they are not used at sharp angles or loops, since wear occurs at the points of greatest friction. There is no way to avoid ultimate wear, and under normal conditions a flexible shaft machine may require several replacement shafts and sheaths during its lifetime.

1. First, remove the handpiece by simply pulling the handpiece off the shaft and sheath with a firm grip.



2. Loosen set screw on motor connector.

3. Slide outer sheath out of motor connector.

4. Remove motor connector with 1" open end or adjustable wrench. Motor connector has a left hand thread and must be turned clockwise (right) for removal.



5. Loosen set screw on the flexible shaft motor coupling and slide shaft off the motor shaft.

www.foredom.com
FOREDOM®
 The Foredom Electric Co.
 Bethel, CT 06801 USA

F-93/77 n 5/10

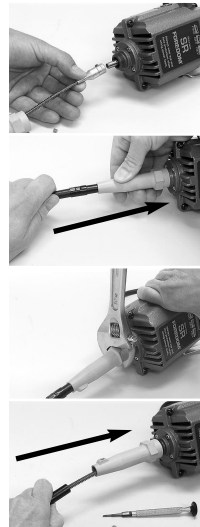
Installation of New Shaft

6. After removing old shaft, loosen set screw on the new flexible shaft motor coupling and slide coupling onto motor shaft.

7. Tighten set screw securely onto the flat of the motor shaft.

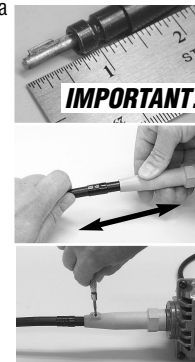
8. Slide motor connector back up over the shaft and tighten to the left (counterclockwise).

9. Slide sheath over flexible shaft with plain fitting toward the motor and into the motor connector. (Each end of the sheath has a metal fitting. One is plain, the other has a groove around it to fit the handpiece.)



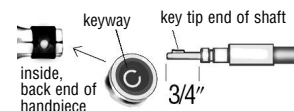
Shaft and Sheath Adjustment

10. Place the entire unit on a flat surface with shaft and sheath extended straight. Adjust the exposed tip of the flexible shaft at the handpiece end so that it extends 3/4" (19mm) beyond the sheath.



11. This is done by moving the sheath in or out of the motor connector. When the correct adjustment is made, tighten the screw in the motor connector.

12. To re-attach handpiece look into the back end of the handpiece for the keyway.



Be sure that the key tip of the flexible shaft is properly lined up with the keyway slot in the back end of the handpiece and push it on. If it is not in line, turn the shaft tip or the handpiece to the correct position.